

# Grease flow detector

Verifies that bearing receives grease

Critical bearings can be expensive to replace and must be lubricated properly to maximise service life. The SKF grease flow detector was developed to solve the long-time question of whether lubricant is reaching a lubrication point.

Installed between the injector and the bearing, the grease flow detector provides verification that bearings receive lubricant. In case of lubrication failure, the sensor signals the controller so that appropriate action can be taken.

The SKF grease flow detector is suitable for applications in steel mills, paper mills, glass plants and other heavy industries.



*Grease flow detector 800030 shown with cable*

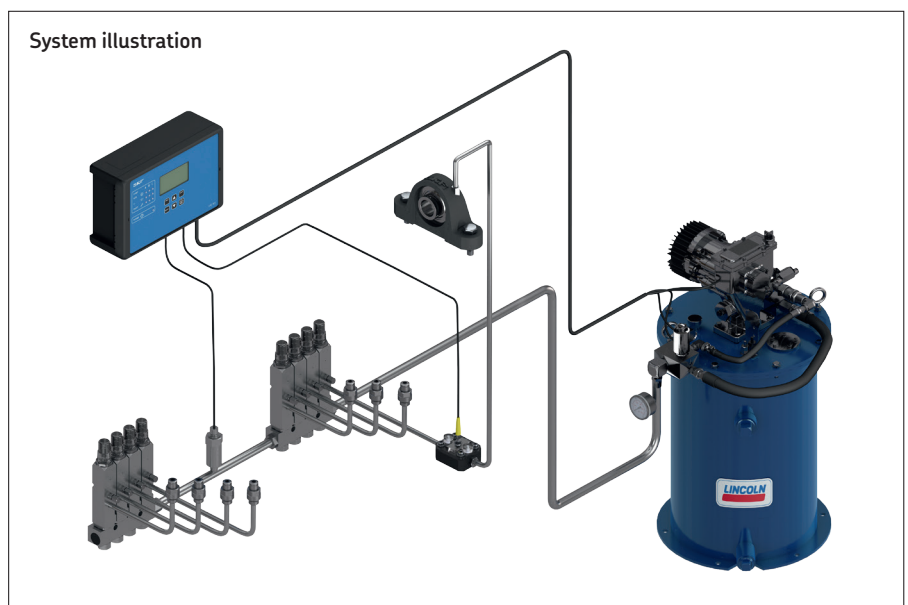


## Grease flow detector advantages:

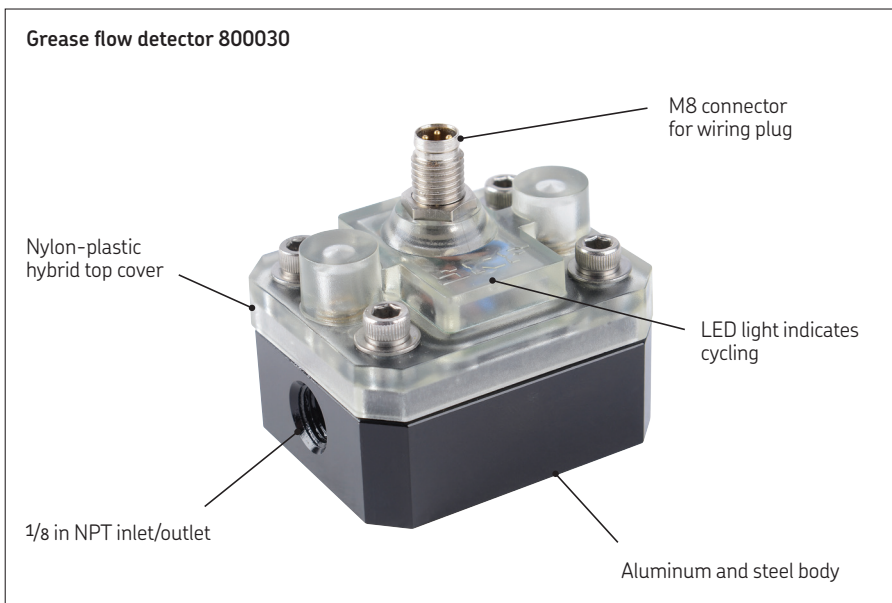
- Verifies receipt of lubricant
- 99.9 percent accurate
- Helps prevent bearing failures
- Reduces unplanned downtime
- Signals controller in case of lubrication failure
- Optimises uptime

## Features:

- Compatible with LMC 301 controller or PLC through a digital input
- Generates a single digital output signal when grease flows through detector during a lubrication cycle



# Grease flow detector provides peace of mind



Models	
Order no.	Description
<b>800030</b>	Flow detector
<b>280137-03</b>	3 m (10 ft) cable
<b>280137-15</b>	15 m (49 ft) cable
<b>280137-30</b>	30 m (98 ft) cable
<b>280137-45</b>	45 m (148 ft) cable

## Technical data

Pressure rating . . . . .	207 bar (3 000 psi)
Port line . . . . .	1/8 in. NPT
Temperature rating . . . . .	-34 to +60 °C (-30 to +140 °F)
Sensitivity range varies with temperature	
-17 to +60 °C (0 to 140 °F) . . . . .	0,03 to 8,2 cm <sup>3</sup> (0.002 to 0.5 in <sup>3</sup> )
-34 to -17 °C (-30 to 0 °F) . . . . .	0,08 to 8,2 cm <sup>3</sup> (0.005 to 0.5 in <sup>3</sup> )
DC unit . . . . .	12-30 V
Approvals . . . . .	CE
Rating . . . . .	IP 67
Lubricant . . . . .	Grease grade 0 to 2
Wetted parts . . . . .	Aluminum, steel, nitrile, rubber and nylon
Dimensions . . . . .	51 x 42 x 48 mm (2 x 1.6 x 1.9 in)

[skf.com](http://skf.com)

© SKF is a registered trademark of the SKF Group.

© Lincoln is a registered trademark of Lincoln Industrial Corp.

© SKF Group 2016

The contents of this publication are the copyright of the publisher and may not be reproduced (even extracts) unless prior written permission is granted. Every care has been taken to ensure the accuracy of the information contained in this publication but no liability can be accepted for any loss or damage whether direct, indirect or consequential arising out of the use of the information contained herein.

PUB LS/P2.16737 EN · July 2016